



# 2017 Community Career+Education Forum *for students*

Hosted by:

Endress+Hauser



In partnership with:



**ASPIRE**  
**JOHNSON COUNTY**  
Imagining . Inspiring . Impacting a Great Community

*"When kids look up to great scientists the way they do to great musicians and actors, civilization will jump to the next level."*

*~Brian Greene (author and scientist)*

# Table of Contents

3	Dear Guests
4	Special thanks
5	Order of activities
6	Thanks to our booth participants
14	Social Media
15	Games/Activities
16	PTU Challenge
17	Student Passport / Educator Passport
18	STEM Studios
19	Robotics
20	Map of robotics booths
22	Map of booths and activities
24	Join the conversation

# Dear Guests,

The donations made to the education foundations are one of the ways we are contributing to increase the future technical talent pool. We must inform, inspire and empower students and all of their adult influencers on what kinds of great careers await them, and the educational and vocational paths that will get them there...The donations made and our annual event allows us to promote STEM and with our industry partners, K-12 schools, partnering universities and community partners, we WILL attract and develop a surplus of well-rounded technical talent.

*~Brandyn Ferguson, VP of Human Resources, **Endress+Hauser***

Central Nine is honored to once again be a part of the Community Career+Education Forum. This event is such wonderful opportunity for our area 7th, 8th and 9th grade students (our future workforce) and their parents to get an updated true picture of what advanced manufacturing and STEM career pathways exist today. There are so many unique characteristics to this event. Students and their parents get to interact with multiple representatives from the advanced manufacturing/STEM industry, as well as speak with post-secondary institution representatives. They also have the chance to take one of three plant tours and engage with a multitude of hands-on activities. Representatives from our area schools are also able to interact and network with all of the businesses and post-secondary representatives. This event truly gives students the chance to envision themselves in a high-demand and high-wage career area, as well as learn the pathway to that career, all while being excited and engaged throughout the evening!

*~Nicole Otte, Director, **Central Nine Career Center***

Caterpillar has been participating in the CCEF Program since its inception in 2014. I have always considered this a great opportunity to engage with our community as well as an investment in our youth. Participation in this program has provided us with the opportunity to champion manufacturing as a career choice as well as execute opportunities outside of this event. Most recently, we have supported area high school robotics teams by serving as judges in their competitions. This is just one of the many opportunities that became available by supporting this event.

*~Don Kinsey, Facility Manager, **Caterpillar Remanufacturing***

The Greenwood Public Library is thrilled to be a part of the Community Career+Education Forum sponsored by Endress+Hauser. It is so beneficial to show students the types of careers and educational resources that are right here in their own community! The Library loves to show off our fantastic S.T.E.A.M. take home kits that emphasis how fun learning science/math/technology/engineering can be and how important it is for our future. We also have programs for kids and teens that build on these concepts, such as making electric slime, exploring robotics and working with everyday objects in experiments! This forum helps us spread the word these skills are important and can be fun!

*~Jane Weisenbach, Director of Development, **Greenwood Public Library***

## Special thanks

- Aramark
- Aspire Johnson County
- Beech Grove City Schools
- Boys & Girls Club
- Caterpillar® Remanufacturing
- Center Grove Community Schools
- Central Nine Career Center
- Clark-Pleasant Community Schools
- Cummins, Inc.
- Duke Energy
- *FIRST®* Indiana *FIRST*
- *FIRST®* Team 234, Cyber Blue Robotics (Perry Meridian High School)
- *FIRST®* Team 1529, CyberCards Robotics (Southport High School)
- *FIRST®* Team 1741, Red Alert Robotics (Center Grove High School)
- *FIRST®* Team 3180 Blaise of Glory (Indian Creek High School)
- *FIRST®* Team 6190 Cyberstorm (Center Grove High School)
- *FIRST®* Team 8149 (Center Grove High School)
- *FIRST®* Team 8791 & 8793 The Green Machine (Greenwood Robotics)
- Endress+Hauser Flow Production
- Endress+Hauser Infoserve
- Endress+Hauser Level and Pressure Production
- Endress+Hauser Sales Center
- Endress+Hauser Temperature and Recorder Production
- Franklin College
- Franklin Community Schools
- Franklin Township Community Schools
- Greenwood Christian Academy
- Greenwood Community Schools
- Greenwood Public Library
- Indian Creek Community Schools
- Indiana American Water
- Indiana Economic Development Corporation
- Indiana State University
- International Brotherhood of Electrical Workers
- IUPUC
- IUPUI
- Ivy Tech Community College (Franklin Campus)
- Johnson County Community Foundation
- Johnson County Development Corp.
- Johnson Heating Cooling Plumbing
- Johnson County Public Library
- LHD Benefit Advisors
- Measurement, Control & Automation Association (MCAA)
- Nestle Waters
- NSK Corporation
- NTN Driveshaft, Inc.
- Perry Township Schools
- Poynter
- Pridgeon & Clay
- Purdue Polytechnic Institute - Purdue University
- Radwell International
- Rockwell Automation
- Roncalli High School
- Rose-Hulman Institute of Technology
- Southport Community Schools
- Superior Essex Inc.
- University of Indianapolis
- 2017 CCEF Planning Committee
- 2017 CCEF Volunteers

## Order of activities

Time	Topic
5:30 pm	Kickoff
5:30 – 8:30 pm	<ul style="list-style-type: none"><li>■ Complementary food, drinks and cookies in dining area</li><li>■ Event activities</li></ul>
5:30 – 8:00 pm	PTU Challenge ( <i>see page 16</i> )
5:30 – 8:30 pm	Outside exhibits ( <i>Cummins</i> )
5:30 – 8:30 pm	Engineer Quiz ( <i>see page 15</i> )
5:30 – 8:30 pm	Are You Smarter Than an Engineer ( <i>see page 15</i> )
5:45 – 8:30 pm	Robotics competition ( <i>see pages 19-21</i> )
6:00 – 8:00 pm	Production Center Tours ( <i>sign-up near dining area</i> )
6:00 – 8:00 pm	STEM Studios ( <i>see page 18</i> )
6:30 pm	Check presentation/Classroom Grants in the Auditorium ( <i>applies to school officials only</i> )
8:30 pm	Event concludes

## Thanks to our participants



### **Caterpillar® Remanufacturing**

Cat Reman recovers materials through differentiated technology and employs environmentally sustainable practices to restore components to good-as-new condition.

Cat Reman is positioned as a high technology, low cost, global brand focused on salvage capabilities.



### **Central Nine Career Center**

A public high school/career center providing College & Career Readiness to students from 9 area high schools. Mission: "We provide the necessary facilities, appropriate equipment, technological instruction, and learning environment relevant to business and industrial needs in order to enhance student success." Central Nine Career Center is an area career/technical school dedicated to the development of the knowledge and skills necessary to prepare students for employment in a chosen career and/or furthering their education at a post-secondary institution. Central Nine is located at 1999 U.S. 31 South in Greenwood, Indiana, and provides career and technical education for a geographic area that encompasses all of Johnson County, the southeast township of Morgan County, and a main portion of the southern third of Marion County including students transported to those districts from the Indianapolis Metropolitan area.

The school serves eight school corporations, which send students from nine high schools. Those high schools are: Beech Grove High School, Center Grove High School, Franklin Central High School, Franklin Community High School, Greenwood High School, Indian Creek High School, Perry Meridian High School, Southport High School, and Whiteland Community High School.



*Working Right.*

### **Cummins Inc.**

We're a place big enough to coach and develop a global workforce and create the world's leading clean, engine technology. We're also small enough for you to find your fit and personal passion with a team of dependable, innovative thinkers who are developing their careers within a diverse, inclusive, empowering environment. This is how we do business – we call it Working Right.

Cummins Inc., a global power technology leader, is a corporation of complementary business units that design, engineer, manufacture, distribute and service engines and related technologies, including fuel systems, controls, air handling, filtration, emission solutions and electrical power generation systems.

Headquartered in Columbus, IN, we employ approximately 55,200 people worldwide and serve customers in approximately 190 countries and territories through a network of more than 600 company-owned and independent distributor locations and approximately 7,200 dealer locations. Cummins earned \$1.4 billion on sales of \$19.1 billion in 2015.



### **Duke Energy**

Duke Energy Corporation is headquartered in Charlotte, NC. Its Electric Utilities and Infrastructure business unit serves approximately 7.5 million retail electric customers in six states in the Southeast and Midwest, representing a population of approximately 24 million people. The company's Gas Utilities and Infrastructure business unit distributes natural gas to approximately 1.6 million customers in the Carolinas, Ohio, Kentucky and Tennessee. Its Commercial Renewables business unit operates a growing renewable energy portfolio across the United States. Duke Energy is a Fortune 125 company traded on the New York Stock Exchange under the symbol DUK. More information about the company is available at [duke-energy.com](http://duke-energy.com).



### **Endress+Hauser**

Endress+Hauser is one of the largest instrument manufacturers in the United States' industrial automation industry – specializing in automation solutions for the chemical, food and beverage, oil and gas, water and wastewater, life sciences, power and energy, primaries and metals, and pulp and paper industries. Endress+Hauser, a Switzerland based company, first began operations in the U.S. in 1970. Since that time, Endress+Hauser has continued to invest in its U.S. operations - investing an average of 10% of its annual revenue into its infrastructure. Over the last eight years, Endress+Hauser has invested roughly \$160 Million into the Greenwood campus. For more information about Endress+Hauser, please visit [www.us.endress.com](http://www.us.endress.com).



### **FIRST® IndianaFIRST**

IndianaFIRST is building the next generation of problem solvers through mentorship, hands on learning, and intense competition. Founded in the fall of 2001, as the Indiana-based affiliate of FIRST, IndianaFIRST supports FIRST programming for students in K-12, teaching them hands-on skills in engineering, science, and technology that they can relate back to their class work.



### **FIRST® Team 234, Cyber Blue Robotics (Perry Meridian High School)**

Cyber Blue, FRC 234, is the FIRST Robotics Team from Perry Meridian High School. Starting in early January, we go from a game launch video and written rules to a fully functioning robot in just 6 weeks. We get there by brainstorming, prototyping, problem solving, designing, building, testing, and continually making improvements and enhancements. We learn electronics and programming, so the robot responds to our commands, important business skills by creating a business plan and completing a risk analysis for the team and how to communicate effectively with sponsors, judges, event visitors and each other. We learn how to work as a team to do things we could never do alone.



### **FIRST® Team 1529, CyberCards Robotics (Southport High School)**

The Southport High School FIRST Robotics Team, the CyberCards, exists to encourage students to find their passion, become an expert in what they are passionate about, and to communicate that passion to others in the community. The team participates in a competition held by FIRST (For Inspiration and Recognition of Science and Technology), a program developed in 1989 to inspire more interest in the fields of science and technology. While the focus of FIRST is the development of students' interests in the areas of Science, Technology, Engineering, Art, and Math; the CyberCards work to prepare young minds to work and thrive in our increasingly technological world and global economy by encouraging students to find their passions.



### **FIRST® Team 1741, Red Alert Robotics (Center Grove High School)**

FIRST Team 1741 Red Alert Robotics is located at Center Grove High School in Greenwood, Indiana. For the past eight years, since our team began in March of 2005, Red Alert has been led by a group of students, mentors, parents, and the Center Grove School Corporation, focused on STEM education and spreading the mission of FIRST, "To inspire young people to be science and technology leaders, by engaging them in exciting mentor-based programs that build science, engineering and technology skills, that inspire innovation, and that foster well-rounded life capabilities including self-confidence, communication, and leadership."



### **FIRST® Team 3180 Blaise of Glory (Indian Creek High School)**

FRC 3180, Blaise of Glory, at Indian Creek High School has been participating in FIRST since 2010. Currently the team has about 20 members along with 3 mentors who assist the team year round. We are a young team working on expanding our program.



### **FIRST® Team 6190 Cyberstorm (Center Grove High School)**

We are team 6190, CyberStorm, the first of the twoCyberStormLogo1Red FIRST Tech Challenge teams that have been founded in Center Grove. We were formed in Center Grove High School located in Greenwood, Indiana. Our goal as a team is to inform our peers about the world of science and technology while having fun and learning from our teammates and mentors.



### **FIRST® Team 6451 Wired Warriors (Whiteland Community High School)**

The Wired Warriors are a robotics team based out of Whiteland Community High School. We participate in FIRST FRC competitions and stay involved with many of their outreach programs. Our main goal is to increase the interest and popularity of STEM related fields and ideas throughout the community. We do this within our own school by supporting STEM education and outside through volunteer work at STEM events.



### **FIRST® Team 8149 Panic In The Build Room (Center Grove High School)**

We are team 8149, Panic in the Build Room. We are one of two FIRST Tech Challenge teams from Center Grove High School in Greenwood, Indiana, and we were founded three years ago. Our primary goal for each year is to spread awareness about science, technology, engineering, and math (STEM) throughout our school and our community in an attempt to encourage more young people to dream of becoming science and technology leaders.



### **FIRST® Team 8791 & 8793 The Green Machine (Greenwood Robotics)**

The Greenwood Robotics program is a chance for students from the Greenwood School Corporation to transform our culture by creating a world where science and technology are celebrated and where young people dream of becoming science and technology leaders. Many students from the Greenwood Community School Corporation attended the 1st Annual Community Career and Education Forum for students at Endress+Hauser. After attending the forum, several Greenwood students and administrators were eager to establish a program that would allow students to compete in an event that combines the excitement of sport with the rigors of science and technology. Led by Mr. Campbell and Mrs. Vest from GMS, several mentors from Greenwood volunteered to start the Greenwood FIRST Tech Challenge program (The Green MACHINE). Students from grades 7-12 can participate. This year Mrs. Sirkin has added a Lego League (FLL) at GMS where 6th graders can now get started in robotics. Our mission is to inspire young people to be science and technology leaders, by engaging them in exciting mentor-based programs that teach science, engineering, and technology skills. We hope to inspire innovation, and foster well-rounded life capabilities including self-confidence, communication, and leadership. In short, Greenwood Robotics Programs are growing good people, by designing, building and competing with robots.





### **Franklin College**

Founded in 1834, Franklin College is a residential, liberal arts institution with a scenic, wooded campus, spanning 207 acres, including athletic fields and a 31-acre biology woodland. Students enjoy the comfort and safety of suburban living, while also experiencing the many opportunities Indianapolis has to offer with only a short 20-minute drive to downtown. The college prepares students to think independently, to lead responsibly and to serve with integrity in their professions, their communities and the world. The college offers its more than 1,000 students Bachelor of Arts degrees in more than 50 majors from 24 academic disciplines, 42 minors, 11 pre-professional programs and five cooperative programs. The college also offers a Master of Science degree in athletic training. In 1842, the college began admitting women, becoming the first coeducational institution in Indiana and the seventh in the nation. Franklin College has historically maintained an affiliation with the American Baptist Churches USA. For more information, visit [www.FranklinCollege.edu](http://www.FranklinCollege.edu). Find Franklin College on Facebook and follow @FranklinCollege on Twitter.



### **Greenwood Public Library**

The Greenwood Public Library exists to serve our community with resources and services to enrich each life. For 100 years, GPL has been at the heart of the community. As we look to the future, we embrace a vision of our community where people are reaching their potential for success. To that end we actively seek to provide resources, opportunities, and connections that enrich lives, promote discovery and foster personal growth for its citizens.



### **Indiana American Water**

Indiana American Water is your local water and wastewater company. Our lives revolve around water. It's somehow involved in everything thing we do, everything we use. We are experts in water service and wastewater treatment.

In Indiana, we put that knowledge to work for customers every day – treating water from diverse sources – from Wildcat Creek to Lake Michigan to local wellfields. Within our 37 water treatment plants across the state, the process is tailored to local water resources and community needs.

We serve about 1.2 million people, in 130 communities, supplying high quality water and wastewater service. We abide by regulations, invest in our vast infrastructure, develop industry innovations, educate our customers on wise water use, and help out where we can in the cities and towns we serve.



### **Indiana State University**

The word “technology” covers a broad spectrum of areas of study and this is reflected in the diverse degrees offered by the College of Technology at ISU. If your interests lie in the fields of adult education, technology and engineering education, interior architecture design, automotive, aviation, computing, construction management, civil engineering technology, packaging, automation and controls, engineering technology, electronics, human resources, manufacturing, mechanical engineering technology, information technology, safety management, technology management or textiles, apparel and merchandising, then the College of Technology offers a degree for you. Graduates obtain some of the best jobs with solid employment across the United States. These careers provide our graduates opportunities to be successful managers in their chosen industry segment.



### **International Brotherhood of Electrical Workers-Local 481**

We are an exclusive hiring hall for over 90 Union Electrical and Telecommunication contractors in Central Indiana. We are a proud partner with the National Electrical Contractors Association (NECA) of Central Indiana. Together we offer apprenticeship opportunities through our state of the art training center, The Electrical Training Institute. We also represent workers in other classifications including motor and sign shops, manufacturing and casino workers. Together we make up a diverse membership of more than 2700 members in central Indiana and over 750,000 nationwide.



### **IUPUC**

Indiana University-Purdue University Columbus (IUPUC) is a unique combination of two globally recognized Big Ten schools: Indiana University and Purdue University. IUPUC is proud to be closely affiliated with one of the nation's top-ranked urban universities: Indiana University-Purdue University Indianapolis. IUPUC students can earn bachelor's degrees in biology, business, communication studies, education, English, general studies, mechanical engineering, nursing, psychology, and sociology or master's degrees in business administration (MBA) and mental health counseling. Students can also start classes towards Indiana University or Purdue University degrees not offered in Columbus and then transfer to another IU campus.



**SCHOOL OF ENGINEERING  
AND TECHNOLOGY**  
INDIANA UNIVERSITY-PURDUE UNIVERSITY  
INDIANAPOLIS

### **IUPUI**

Are you creative? Do you like to see how things work inside and out? Are you a problem solver? If so, it sounds like a career in engineering or technology might be for you and the Purdue School of Engineering and Technology, IUPUI, is a terrific place to check out. We offer Purdue University degrees in many different engineering disciplines including biomedical, computer, electrical, energy, mechanical, and motorsports as well as a host of technology degrees. We even offer a degree in Music Technology – but take note - finishing this program results in a degree from Indiana University. Located in downtown Indianapolis, the possibilities are endless. Want to know more? We love to show off all the amazing things happening within our school and on the IUPUI campus. Call or send an e-mail to make a visit: 317-274-2533 or [etinfo@iupui.edu](mailto:etinfo@iupui.edu). You can always find more info at our website too: <http://www.engr.iupui.edu>.



### **Ivy Tech Community College**

Ivy Tech Community College is the state's largest public postsecondary institution and the nation's largest singly accredited statewide community college system. Ivy Tech has campuses throughout Indiana. It serves as the state's engine of workforce development, offering affordable degree programs and training that are aligned with the needs of its community along with courses and programs that transfer to other colleges and universities in Indiana. It is accredited by the Higher Learning Commission and a member of the North Central Association.



### **Johnson County Public Library**

Since 1911, Johnson County Public Library has worked toward improving the quality of life for all citizens of Johnson County, Indiana. Our mission is strengthening our community by connecting people, resources and experiences. Throughout the past 100 years JCPL has expanded and now offers four branches and a Library Services Center. We also offer Digital Content through ebooks, downloadable audio and video, and emagazines. Check out all your library can do for you at <http://www.pageafterpage.org>.



### **Johnson Heating Cooling & Plumbing**

Johnson Heating Cooling Plumbing is a local family owned business serving central Indiana since 1968. Johnson Heating Cooling Plumbing provides excellent service for of all your residential heating, cooling and plumbing needs. We also service commercial heating, cooling and plumbing. Whether it's taking care of your air conditioner in the summer, repairing your sewer line or cleaning your clogged drain line Johnson's on the job.

Services include: residential furnaces, air conditioners, water heater repair, burst pipes, and more.

If it heats, cools or flows – Johnson's on the Job.



### **Kirby Risk**

Kirby Risk Corporation places a high value on its customers, employees, vendors and community relations. Going above and beyond what it takes to provide the right parts at the right time, to the right place, and at the right cost is not a sacrifice...it's a minimum requirement. Staying committed to this concept of "sacrificial service" has fueled Kirby Risk since 1926. *Kirby Risk Electrical Supply* provides high-quality, state-of-the-art electrical, automation, lighting and power distribution solutions to people responsible for maintenance, design and installation of electrical systems.



### **NSK Corporation**

NSK is a world wide manufacturing company that produces motion control products. Our products help make the world move. Our Franklin Campus is home to NSK Corporation and NSK Precision America. NSK Corporation produces HUB bearings and TRB Bearings for automotive customers. NSK Precision America produces linear guides and ball screws for industrial customers and the medical industry.

As a company, we offer a wide variety of career paths. Our STEM paths include Machine Operators, Engineering, Maintenance and Quality. Other paths include Supply Chain, Human Resources and Accounting.

For more information on our company, please visit our website [www.nskamericas.com](http://www.nskamericas.com).



### **NTN Driveshaft, Inc.**

Constant Velocity Joints: NTN started production of constant velocity joints (CVJs) in Japan in 1963. In 2007, the number of CVJs produced on a cumulative basis surpassed 400 million units. Following aggressive expansion of production worldwide in the 1990s, we now have a strong base of operations to respond to the global sourcing needs of the automotive industry.

We manufacture where we sell: Since 1991, NTN has been producing American-made CVJs at our state-of-the-art manufacturing facility in Columbus, Indiana. This plant has been recognized for environmental stewardship by the government of Indiana and is a zero-landfill operation. We've continued to expand our global presence with more than 18 CVJ plants around the world.



### **Nestlé Waters North America**

Nestlé Waters North America provides people with an unrivaled portfolio of bottled waters for healthy hydration. Brands such as Poland Spring®, Nestlé® Pure Life®, Perrier®, and S. Pellegrino® have driven Nestlé Waters North America to be the third largest non-alcoholic beverage company by volume in the U.S. Nestlé Waters North America also owns and operates ReadyRefresh SM by Nestlé®, the largest home and office water delivery service by volume in the U.S. Based in Stamford, Connecticut with some 8,500 associates, Nestlé Waters is committed to reducing its environmental footprint across its operations. As a natural resource company, Nestlé Waters sustainably manages our 47 spring sources and maintains nearly 14,000 acres of natural watershed area. The company is also committed to creating shared value and being a good neighbor in the 140 communities where it operates in the U.S.



### **Poynter**

Poynter is Indiana's largest full-service sheet metal and custom metal crafter. Our capabilities include fabrication and installation of ventilation and exhaust systems, dust collection and extraction systems, vent and fume hoods, architectural wraps and cladding, tanks and pressure vessels, structural components, handrails, paint and spray booths, machine guarding, duct cleaning services, and custom fabrication. Headquartered in Greenwood Indiana, Poynter serves clients throughout the United States.

No job is too large or too small for Poynter's professionals. Our team of innovative engineers and skilled craftsmen can design and fabricate anything from complex CAD designs to customer ideas. Our highly trained installation crews can then put these components and systems into operation. Whether they're installing a simple component or a complex system, their attention to quality and detail assures our customers of long-term reliability and efficiency. Because we understand that it's important not to have a negative impact on normal business operations, our crews operate 24/7. We are always there when our customers need us to be there.

Recently, Poynter was honored to be accepted into the premier Peer Group of like-minded sheet metal contractors focused on implementing best practices nationally across the country.



### **Pridgeon & Clay**

Pridgeon & Clay is one of the largest independent, value-added manufacturers and suppliers of automotive stamped and fine-blanked components in the United States. Our 80,000 sq-ft Franklin, IN facility with Manufacturing, Logistics, and Support Offices, specializes in lighter gauge stamping and assembly, offering Progressive and Robotic Transfer Stamping, Robotic GMAW (MIG) Welding, End Sizing, Resistance Welding, and Quality Qualification/Verification. We are TS-16949 and ISO-14001 certified.



### **Purdue Polytechnic Institute - Purdue University, West Lafayette**

The Purdue Polytechnic Institute academic programs encompass a learn by doing philosophy with team based projects, global immersions, and theory-based application. Areas of interest include Aviation, Computing and Graphics, Construction Management, Engineering Technologies, Technology Education, and Technology Management. The Polytechnic learning experience is designed to produce graduates who not only have deep technical knowledge and applied skills but also possess problem-solving, critical thinking, communications, and leadership skills sought by global industries and communities.



### **Radwell International, Inc. / Radwell.com**

Radwell sells & repairs industrial electrical and electronic control devices. We sell & repair timers, counters, photoelectric sensors, circuit breakers, pushbuttons, PLC's, motors, speed control and any other devices used to make machinery run. Specifically, Radwell services power plants, automakers, chemical plants, food processing facilities, municipalities, government agencies, bakeries, amusement parks, exporters, plastic molding and extruders, steel plants and a long list of other business sectors.



### **Rockwell Automation**

Rockwell Automation, the world's largest company dedicated to industrial automation and information, makes its customers more productive and the world more sustainable. Throughout the world, our flagship Allen-Bradley® and Rockwell Software® product brands are recognized for innovation and excellence. Rockwell Automation has approximately 22,000 employees serving customers in more than 80 countries worldwide.



### **Rose-Hulman Institute of Technology**

It's true Rose-Hulman has been ranked No. 1 by U.S. News & World Report among institutions whose highest degree in engineering is the master's. With 99% placement, the school is ranked in the Payscale top 10 for starting salaries. Rose-Hulman has 2,100 undergraduate and 100 graduate students majoring in engineering, science or mathematics. As students prepare for their careers, they experience a hands-on education while learning the value of teamwork as well as formulas and equations.



### **University of Indianapolis**

University of Indianapolis, founded in 1902, is a private liberal arts institution offering 100+ undergraduate degree programs, 37 master's degree programs, six doctoral programs, and a variety of certificate programs. Personalized attention, experiential learning, energetic culture and a student-to-faculty ratio of 12:1 are just the beginning of what makes University of Indianapolis unique. The university recognizes that college is more than taking classes; the experience is about building a lifelong foundation. The university's motto, "Education for Service," is central to the institution's identity and purpose. This philosophy is integrated into the curriculum of every academic program. Students and faculty alike participate in service learning trips, volunteer opportunities, and community involvement projects, often in the context of their own careers.



### **Vectren**

Vectren Corporation (NYSE: VVC) is an energy holding company headquartered in Evansville, Ind. Vectren's energy delivery subsidiaries provide gas and/or electricity to more than 1 million customers in adjoining service territories that cover nearly two-thirds of Indiana and about 20 percent of Ohio, primarily in the west-central area. Vectren's nonutility subsidiaries and affiliates offer energy related products and services to customers throughout the U.S. These include infrastructure services and energy services. These nonutility companies are Miller Pipeline Corporation and Minnesota Limited, which together are known as MVERGE, and Energy Systems Group. Vectren Corporation employs more than 1,800 people and more than 5,600 when including Vectren's nonutility companies.

## Social Media

### Snapchat

Be a part of the CCEF story on Snapchat! Scan our Snapcode to add Endress+Hauser USA. Then follow our story and use our custom CCEF filters to add your own photos.

#### How Do I Scan Someone's Snapcode Using The Camera?

1. Open up Snapchat
2. Make sure you're on the camera as if you were about to Snapchat a photo
3. Point the camera at the snapcode
4. Press and hold the screen over the snapcode
5. It should notify you that it added a friend

### Follow us on Snapchat

@endress\_us



### Twitter

You can also follow Endress\_US on Twitter for CCEF updates. Join the conversation by using the hashtags #CCEF2017 and #STEMpower!



## Games/Activities

### Engineer Quiz



Industrial Engineer  
Chemical Engineer  
Mechanical Engineer  
Civil Engineer  
Electrical Engineer  
Computer Engineer  
Materials Engineer  
Aerospace Engineer  
Environmental Engineer

What kind of engineer should you be?? Make sure to stop by the Engineer Quiz booth to find out what type of engineering career could best fit you! Take a quick and fun personality quiz, which will generate one of nine engineering careers that you could consider for the future!

### Are You Smarter Than an Engineer



Do you think you have what it takes to outsmart an engineer? Come by the Are You Smarter Than an Engineer station to test your STEM knowledge against one of Endress+Hauser's engineers.



# PTU CHALLENGE



Sign-up inside the PTU®

5:30 - 8:00 PM



Take the PTU® (Process Training Unit) Challenge and see what it's like to work as a plant engineer or instrument technician in a simulated process plant! Here you will get hands-on experience with the types of operation and troubleshooting found in real-life process plants and get the chance to win cool prizes! **Student participants only. Must be present to win.**





# Going places with STEM PASSPORT

## Student Passport

Visit as many booths as you can, fill your passport with stickers that you receive at each booth. Fill in the contact information for a chance to win cool prizes! Make sure to drop off your passport when you exit. You will be contacted by phone or e-mail if you are a winner!



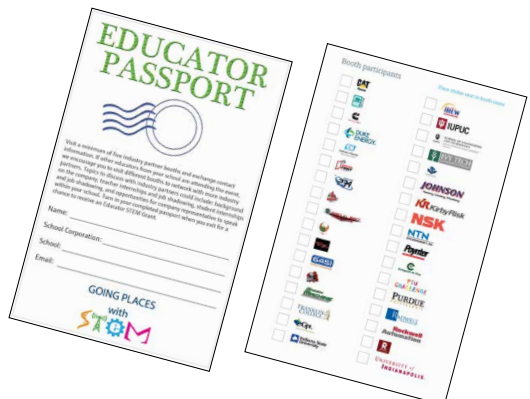
## Educator Passport for STEM Grants

This year, STEM Grants will be based on educator participation. The guidelines to be eligible to receive STEM Grant dollars include:

- Visit at least five exhibitor booths
  - Discuss teacher internships
  - Discuss student internships
  - Discuss student job shadowing opportunities
  - Discuss company representatives speaking at schools
- Must exchange contact information or business cards with industry partners
- Willingness to share impact story or usage of STEM Grant

Once an Educator Passport is complete, make sure to drop off your passport when you exit. Winners will be contacted by phone or e-mail.

Please join us at 6:30 pm in the Slope Auditorium for a group check photo op!





**6:00 - 8:00 PM**

Plan on being an expert in a STEM field? Subject matter experts are often asked to share their knowledge and ideas with others. STEM Studios challenges future subject matter experts through actively participating in a short interview style setting in front of a video camera. Come up with creative answers to the questions we ask while demonstrating your ability to discuss strategies, train, and give insight to the engineering world. And see yourself on screen, picturing yourself in your future career!

# ROBO ICS

Located in the Sales Center  
(brown brick building)

**5:45 - 8:30 PM**

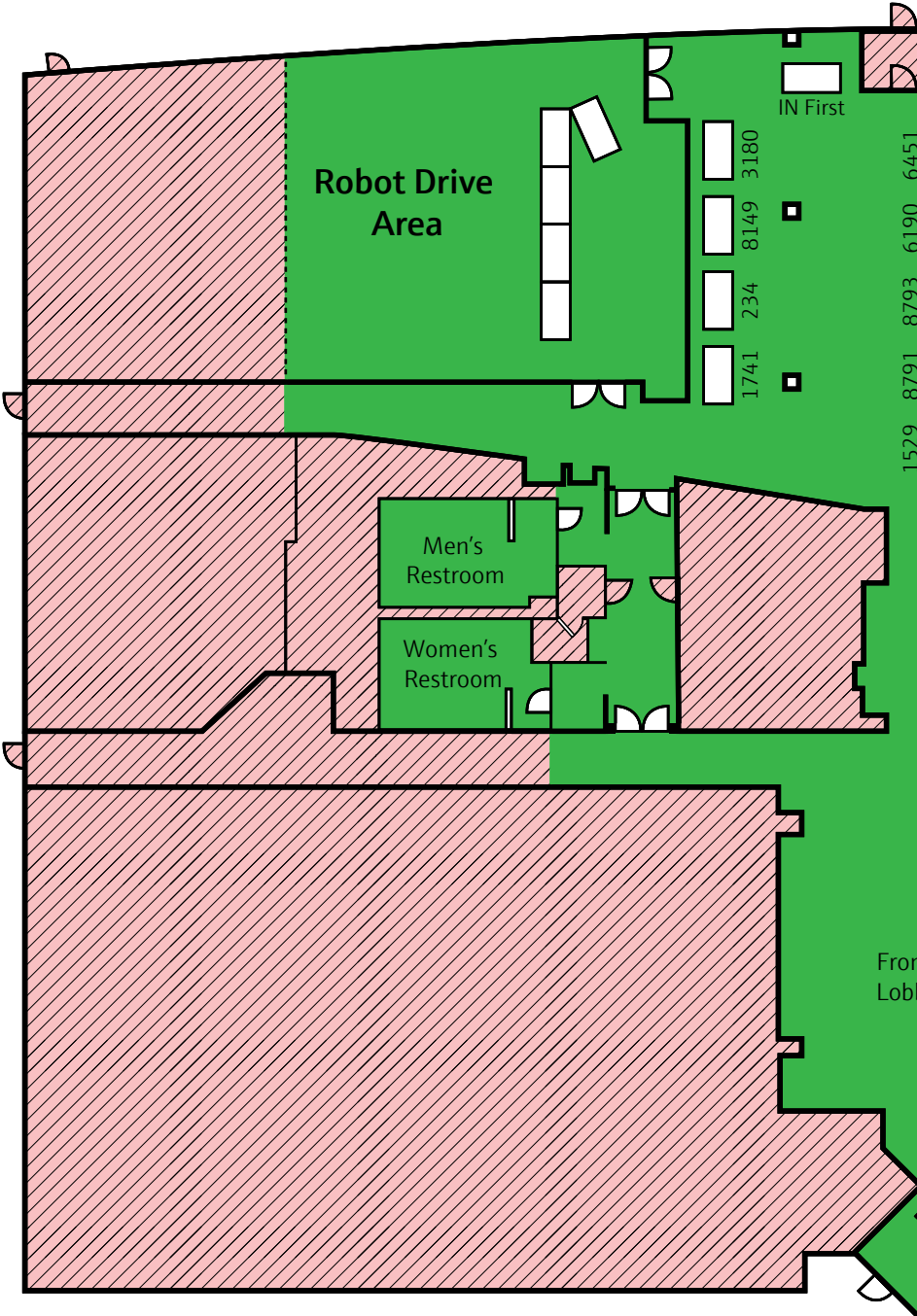
Join us in the Sales Center for a Robotics exhibit you will not want to miss! Robotics teams from the local Johnson and southern Marion County school systems will be on-site to show off their work, talk about how STEM and robots go together and even host a fun competition.

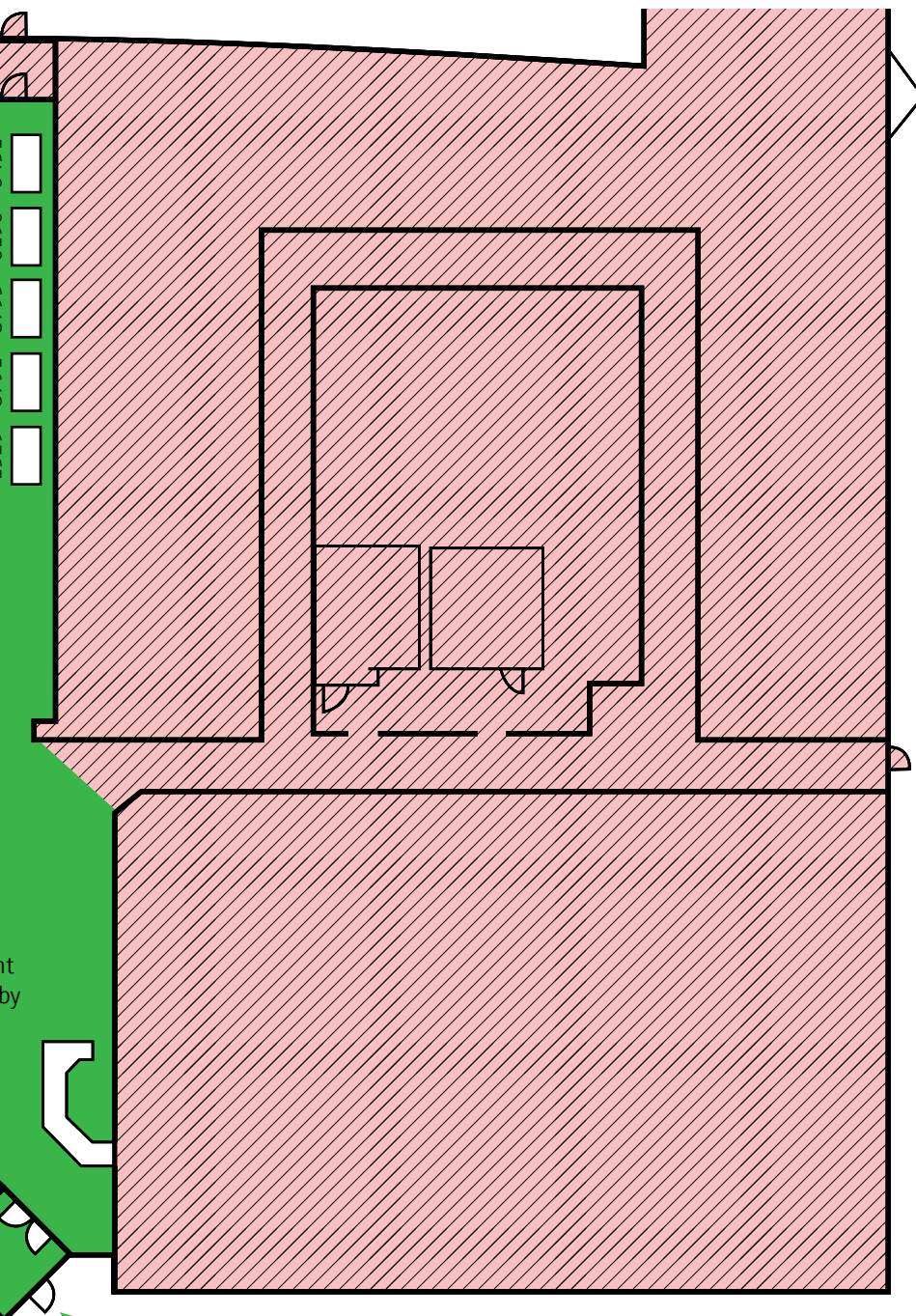
Come score a goal with the robots! Experience the thrill of driving a robot and filling up your passport. Yes, that's right, you will be given the chance to join in on the competition!

Be sure to check us out in the Sales Center building!

Map of robotics booths

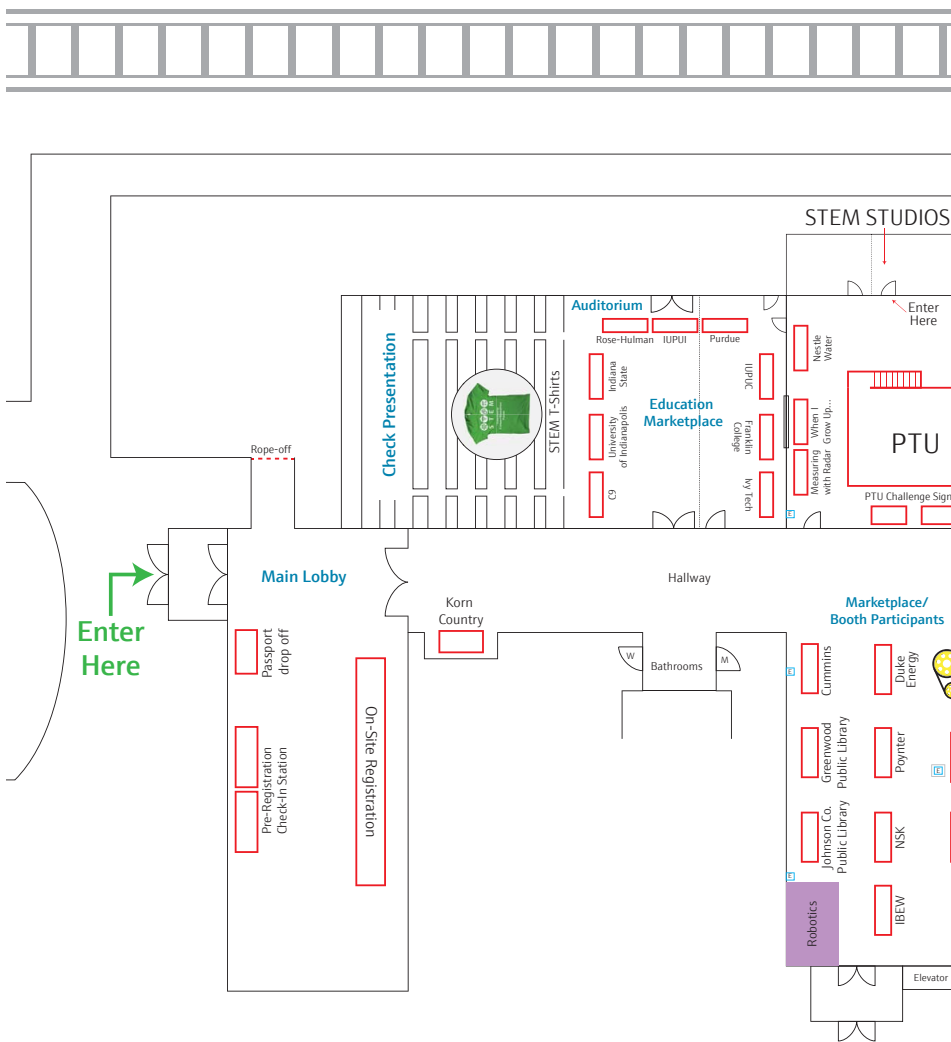
Sales Center building (brown brick building)



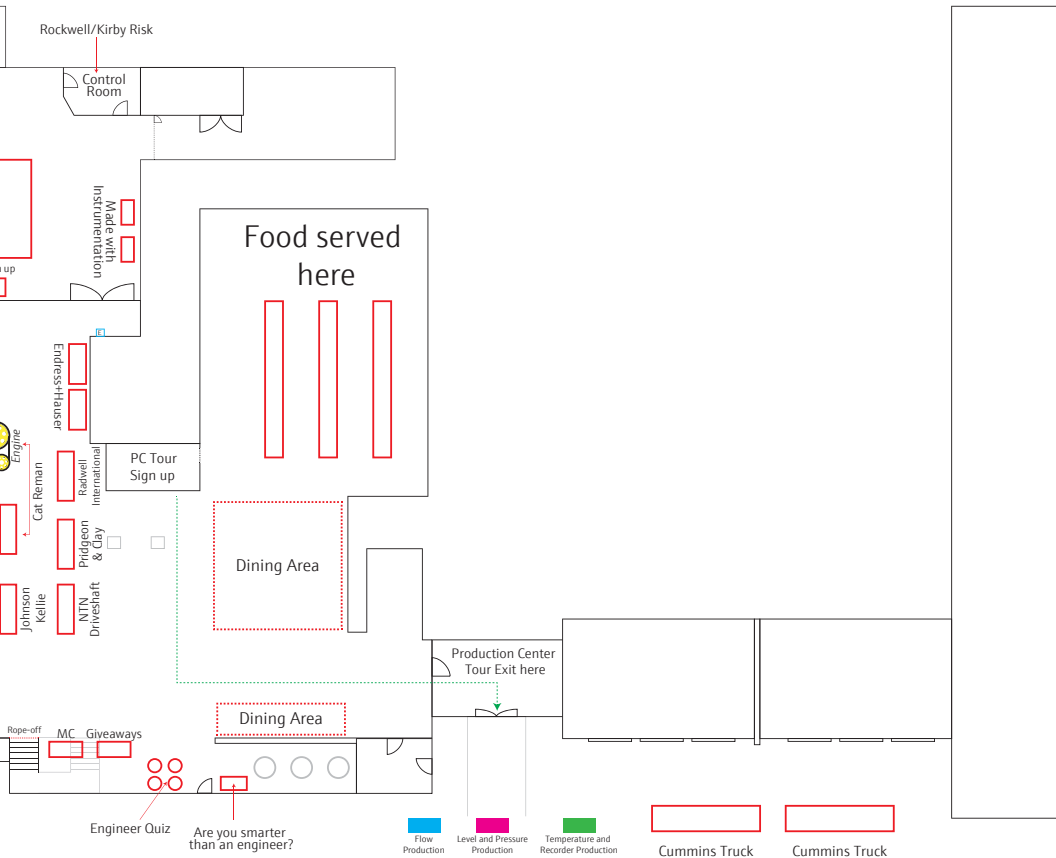


# Map of educational/manufacturing booths and activities

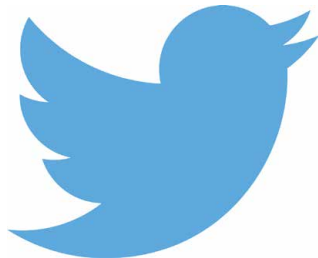
## Customer Center building (main building)



# Railroad



# Join the conversation!



**@Endress\_US**  
**#CCEF2017**

Have questions about the event or any of the exhibitors?  
Send a tweet to @Endress\_US and we will tweet back an answer!

Thanks for following us!



**ASPIRE**  
**JOHNSON COUNTY**  
Imagining . Inspiring . Impacting a Great Community

Endress+Hauser

